

# Maths Challenge Cards

Are you a maths whizz ?



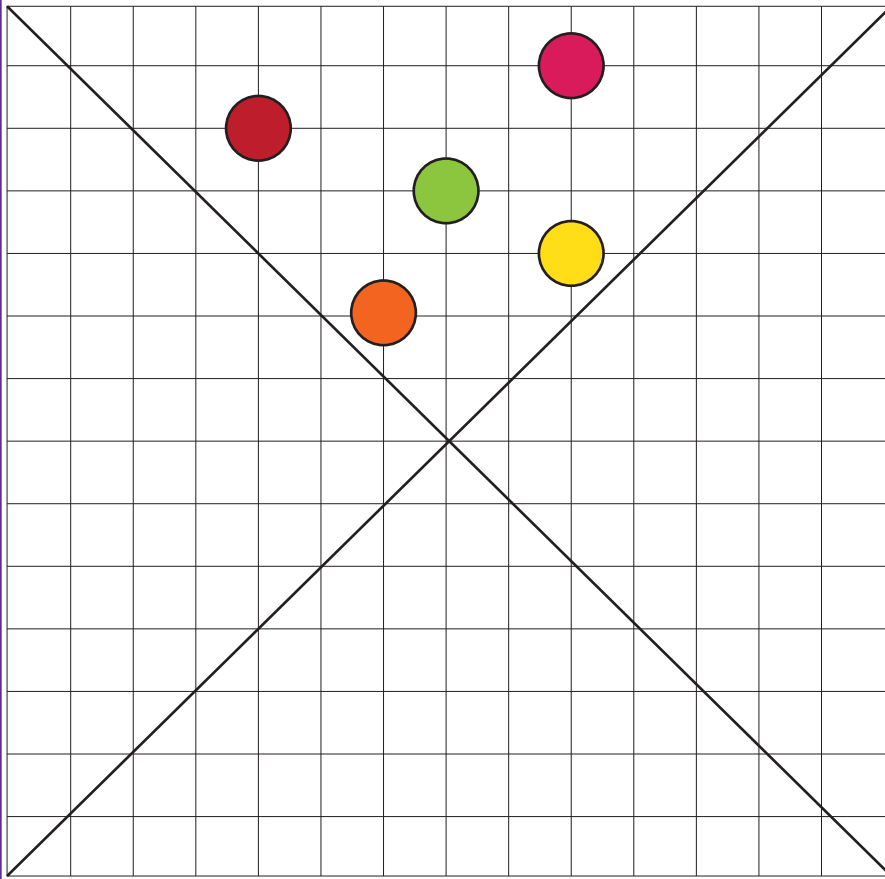
Copyright 2011 www.tpet.co.uk

# Maths Challenge Cards

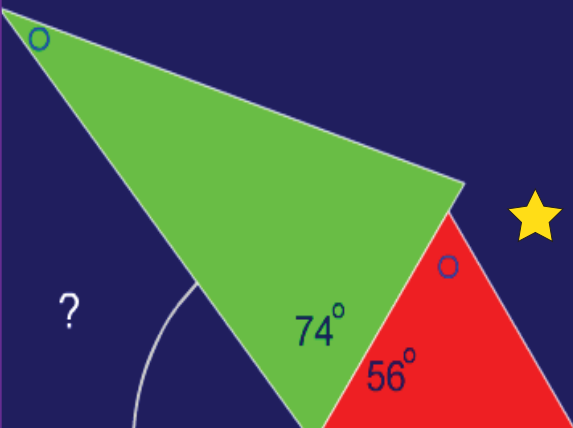
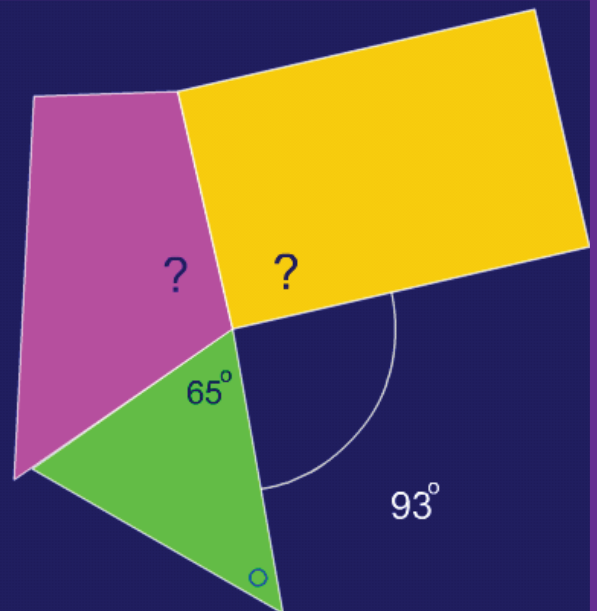
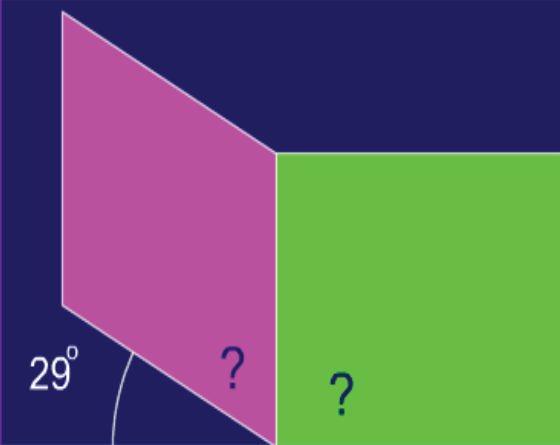
Are you a maths whizz ?



Copyright 2011 www.tpet.co.uk



★ Copy this onto squared paper. Reflect the coloured dots in the two lines of symmetry.



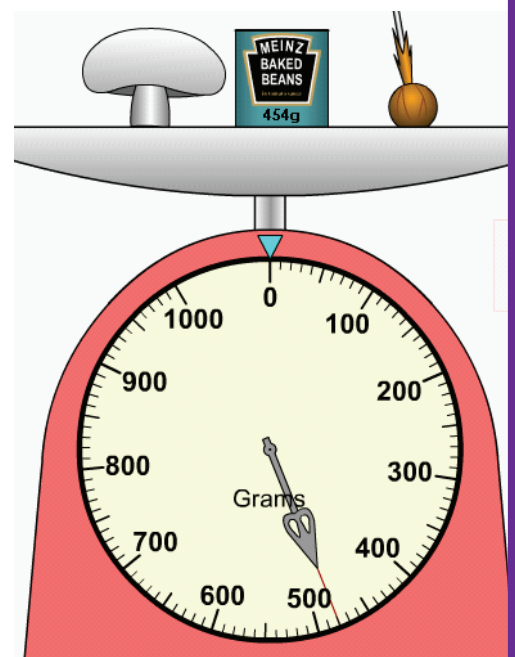
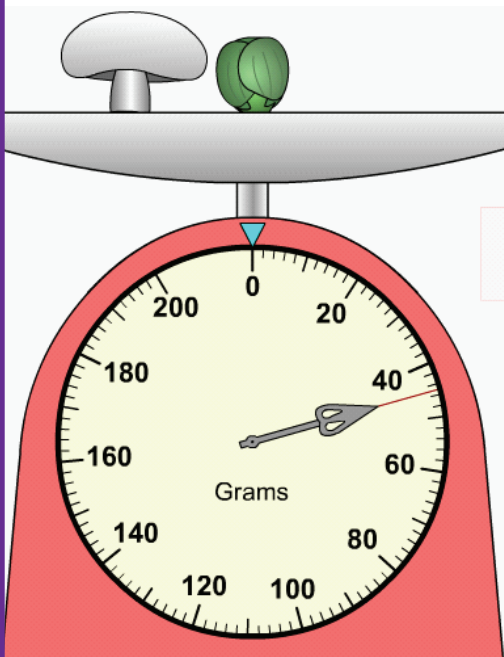
★ Find the missing angles.



- ★ Write the rule for working out the area of a rectangle.
- ★ Write a rule for working out the area of a triangle.
- ★ With your partner, test if your rule works.
- ★ How did you test your rule?
- ★ Calculate the area and the perimeter.



- ★ A sprout weighs 32g. Find the weight of one mushroom and one lollipop in grams.



1.2	0.6	2.7
3.3	0.8	0.2
6.1	3.8	4.4

- ★ Find the total of the decimals in each row, column and diagonal.
- ★ What is the difference between the largest and smallest total?

★ Which 2 numbers on the grid total 1.4?

★ Which 3 numbers total 7.7?



69.5	18.3	63.3	24.9	59.4
2.5	49.7	34.9	82.3	37.5
49.2	7.9	60.9	35.4	62.6
45.5	95.7	84	28.7	47.6
50.8	49.7	3.1	25.2	71.4

★ Which two numbers have the largest total?

★ Which two numbers have the largest difference?

★ Which row, column or diagonal has... the largest total? the smallest total?



- ★ I have 8 bowls of water. Each bowl holds 3.8 litres. How much water do I have?
- ★ Multiply the answer to question 1 by 9.
- ★ What is the total mass of 45 pins weighing 2.3 grams each?



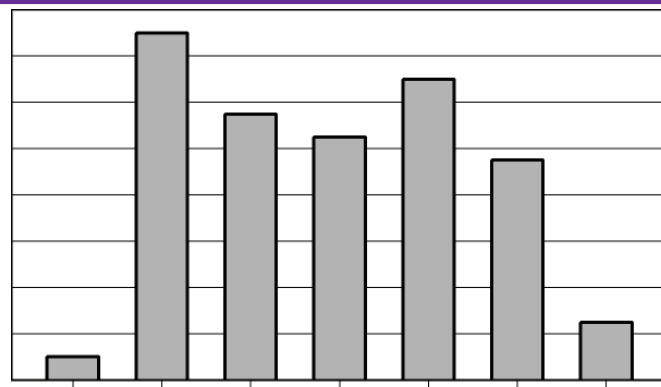
- ★ 9 tins of beans weigh 1.116Kg. How much does each tin of beans weigh?



- ★ Is the area of a square with sides 8.4cm, 70.54, 70.55 or 70.56?
- ★ I made 2.4 litres of tropical juice using orange, pineapple and mango juice. I use 1285ml of orange and 375ml of pineapple. How much mango do I use?
- ★ Construct a square with sides of 54mm.
- ★ Measure the diagonal in mm.



- ★ The bar chart shows the number of people treated for minor injuries at a hospital on each day of the week.



- ★ Can you label the axis and give the chart a title?
- ★ The greatest number of people treated in a day was just over 70. Can you label the vertical scale?
- ★ Estimate the number of people treated on each day of the week.
- ★ Write 3 facts & 3 questions from the graph.

Year 5



- ★ Sam jumps 1.5m. How many points does she get?

- ★ Ben and Sam get 6 points together. What

is the shortest distance Ben could have jumped? What is the longest distance?

- ★ Zoe gets 1 point. The longest distance she could have jumped is..?

Standing Long Jump		
Over	80 cm	1 point
Over	100 cm	2 points
Over	120 cm	3 points
Over	140 cm	4 points
Over	160 cm	5 points
Over	180 cm	6 points



Year 5